



MINIBRS



Compact, powerful system is comfortable, easy to use and requires no containment

The MiniBRS™ system is a compact and easily maneuverable abrasive blaster that blasts and recovers spent abrasive, contaminants and dust in the same step, eliminating the need for containment. It can also blast or vacuum separately for increased versatility. Unlike other systems on the market, the MiniBRS has an ergonomic design, a lightweight yet durable blast head and smaller diameter, lighter weight hoses that are sized to match the system. The new blast/vacuum head features a 40% larger blast pattern, an ultra comfortable trigger-style deadman control that allows one-handed start/stop and the ability to blast high-temperature surfaces, using an optional adapter/ brush. Blast and recover at up to 200 feet away from the unit. Can operate on just a 185 cfm compressor.

NEW FEATURES

- Even better portability with a new, improved and more durable skid design and new wheel alignment that makes moving and turning easier. Increased skid stability minimizes bumps when going over uneven surfaces
- Quiet vacuum eductor • New palm button actuated automatic air pulse system for quick and easy cleaning of dust collector filter cartridge
- New blast and vacuum head with 40% larger blast pattern (or greater with adapters/nozzles) significantly improves productivity
- New trigger-style deadman control makes operation even more comfortable than standard deadman
- High-temperature blast head option allows for blasting of high temperature surfaces (up to 500 °F)
- Improved muffler reduces noise level by 15% (from 110db to 96db)

PERFORMANCE FEATURES

- 150 psi-rated, 0.46 cu. ft. pressure vessel with integral media screen
- Blast pressure regulator
- 75 cfm eductor (pneumatic vacuum pump) / Optional 100 cfm eductor available for increased suction
- Airwash reclaiming
- Secondary cyclonic dust separator
- Dust collector with polyester filter cartridge
- Differential pressure gauge on the dust collector to alert operator to clean filter
- 25 ft. by ½ in. blast hose assembly
- 25 ft. by 2 in. vacuum hose
- Blast and Recover Head Assembly with No. 3 or No. 4 blast nozzle (please specify when ordering)
- Teravalve™ XL™ remote control abrasive metering valve (tungsten carbide sleeve)

SPECIFICATIONS

Blast Pattern:

¾" to 1 ¼" using a No. 3 nozzle

Maximum working pressure:

150 psig at 250 °F (10.3 bar at 121 °C)

Blast hose size:

25' x ½" diameter hose

Vacuum hose size:

25' x 2" diameter hose

Electrical requirements: 12 VDC (for optional electric deadman controls)

Abrasive capacity:

Blast vessel – 0.46 cu. ft. (8.5 L) Reclaim hopper – 0.3 cu. ft. (8.5 L)

Vacuum system:

Pneumatic vacuum pump (eductor)

Dust collector filter:

6" diameter, dry poly-bond

Dimensions:

62.4" H x 24.6" W x 36.5" L

Blast head:

9.3" H x 3.5" W x 10.4" L



© 2026 Schmidt. All rights reserved. Scan the QR code for product, patent, trademark, and legal information.



US: 1-800-231-2085
Asia: +603-7865 6524
Middle East: +966-54-500-8808



schmidtmfg.com

BLAST HEADS



The current trigger style design allows the operator to use the grip hand to control blast on/off control while leaving the other hand free to be on the blast head and to push the G2 safety button. This ergonomic improvement provides a more secure and more comfortable two hand grip on the blast head. Also, having two hands on the blast head allows for the operator to move and manipulate the blast head.

FEATURES

- Longer lasting brushes
- Easier to slide head over surfaces during blasting
- Better containment during blasting
- Improved vacuum flow
- Brushes available (Flat brush, Inside corner brush, Outside corner brushes, and Hi-Temp brushes)
- OD Pipe adapters (for blasting outside diameter of pipes) (Available upon request)

ADDITIONAL MINIIBRS FEATURES

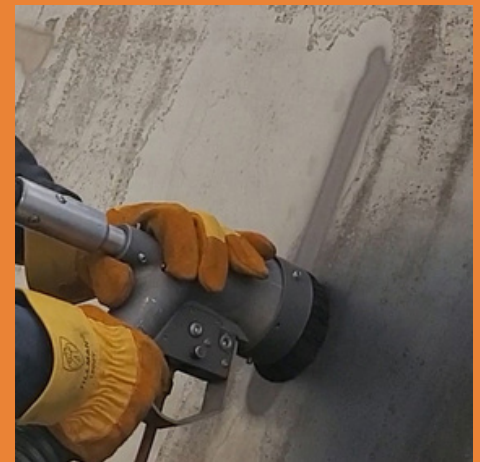
- Complete system includes everything needed to blast, recover contaminants and handle dust and debris. Just add abrasive and compressed air
- Quick set-up. Compact and easy to move
- Includes the industry-leading TeraValve™ XL™ abrasive metering valve, ComboValve® and Auto Air valve
- Easy-access port to remove large debris from screen
- Optional electric deadman blast controls feature the G2E Trigger Deadman. Electronic controls are recommended for hose lengths 150 feet or longer.



INSIDE CORNER



OUTSIDE CORNER



WORK HEAD BLASTING PATTERN

Contact your local Schmidt distributor or call Schmidt below for distributor information.



US: 1-800-231-2085
Asia: +603-7865 6524
Middle East: +966-54-500-8808



schmidtmfg.com